



Application

- Civil engineering
- Mines, quarries, Coal ore & slurries
- Sewage treatment plants
- General pumping purposes

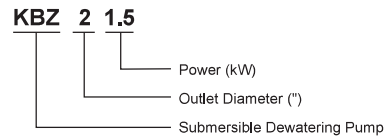
Pump

- Max. liquid temperature: +40°C
- Flow: up to 60 m³/h
- Head: up to 57 m
- Power: 1.5 kW (2 HP) to 15kW (20 HP)
- Max. Immersion depth: 25 m
- Optional cable length

Motor

- Copper winding
- Insulation class: B
- Protection class: IP68

Identification Codes

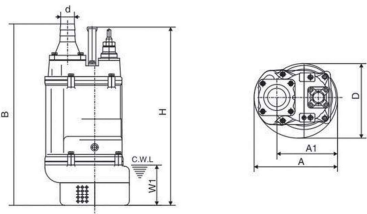


Technical Data

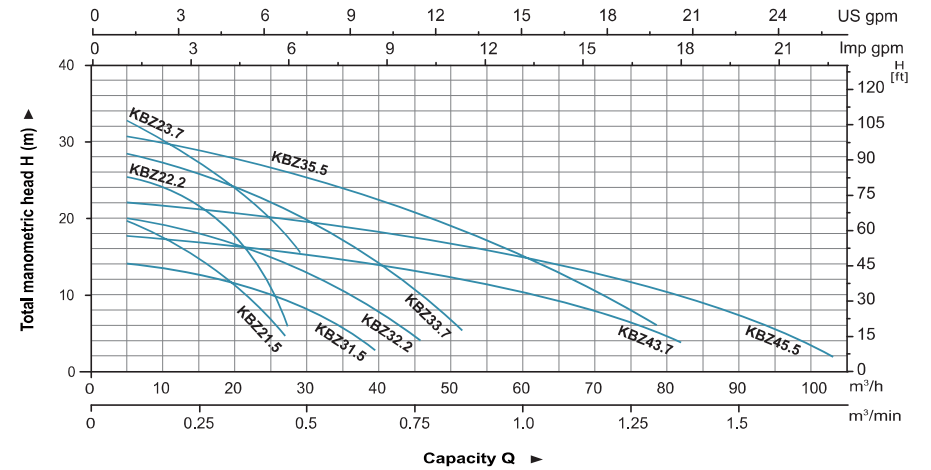
| Model | Outlet mm | Power | | Max head m | Max flow | | Impeller passage mm |
|---------|--------------|-------|-----|---------------|-------------------|---------------------|------------------------|
| | | kW | HP | | m ³ /h | m ³ /min | |
| KBZ21.5 | 50 | 1.5 | 2 | 22 | 27 | 0,45 | 8,5 |
| KBZ22.2 | 50 | 2.2 | 3 | 26 | 27 | 0,45 | 8,5 |
| KBZ23.7 | 50 | 3.7 | 5 | 34 | 29 | 0,48 | 8,5 |
| KBZ31.5 | 80 | 1.5 | 2 | 14,5 | 40 | 0,67 | 8,5 |
| KBZ32.2 | 80 | 2.2 | 3 | 21 | 50 | 0,83 | 8,5 |
| KBZ33.7 | 80 | 3.7 | 5 | 29 | 55 | 0,92 | 8,5 |
| KBZ35.5 | 80 | 5.5 | 7,5 | 32 | 70 | 1,17 | 8,5 |
| KBZ43.7 | 100 | 3.7 | 5 | 18 | 90 | 1,5 | 8,5 |
| KBZ45.5 | 100 | 5.5 | 7,5 | 23 | 105 | 1,75 | 8,5 |

Dimension

| Model | d | A | A1 | B | D | H | W1 |
|---------|-----|-----|-----|-----|-----|-----|-----|
| KBZ21.5 | 50 | 235 | 173 | 517 | 216 | 486 | 120 |
| KBZ31.5 | 80 | 235 | 173 | 517 | 216 | 486 | 120 |
| KBZ22.2 | 50 | 235 | 173 | 517 | 216 | 486 | 120 |
| KBZ32.2 | 80 | 235 | 173 | 517 | 216 | 486 | 120 |
| KBZ23.7 | 50 | 283 | 208 | 628 | 252 | 638 | 150 |
| KBZ33.7 | 80 | 283 | 208 | 628 | 252 | 638 | 150 |
| KBZ43.7 | 100 | 283 | 208 | 642 | 252 | 638 | 150 |
| KBZ35.5 | 80 | 306 | 218 | 671 | 259 | 598 | 150 |
| KBZ45.5 | 100 | 306 | 218 | 686 | 259 | 598 | 150 |

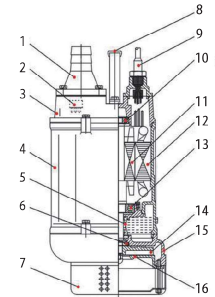


Hydraulic Performance Curves



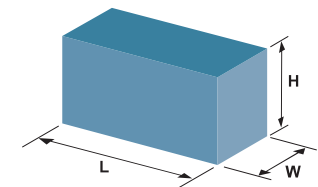
Materials Table

| No. | Part | Material | No. | Part | Material |
|-----|-------------------|------------------------------|-----|-------------|-------------------|
| 1 | Hose coupling | Cast iron | 9 | Cable | |
| 2 | Thermal protector | | 10 | Bearing | |
| 3 | Upper cover | Cast iron | 11 | Rotor | |
| 4 | Motor cover | Cast iron | 12 | Stator | |
| 5 | Oil seal | | 13 | Bearing | |
| 6 | Mechanical seal | Sic-Sic/Carbon-Sic (ø2,2 kW) | 14 | Impeller | High chrome alloy |
| | | Sic-Sic/Sic-Sic (ø3,7 kW) | 15 | Pump body | Cast iron |
| 7 | Strainer | Steel | 16 | Inlet plate | Ductile iron |
| 8 | Handle | Steel | | | |



Package Information

| Model | N,W (kg) | G,W (kg) | L (mm) | W (mm) | H (mm) | Quantity (PCS/20 TEU) |
|---------|----------|----------|--------|--------|--------|-----------------------|
| KBZ21.5 | 34,5 | 37,5 | 585 | 270 | 270 | 648 |
| KBZ22.2 | 36 | 39 | 585 | 270 | 270 | 648 |
| KBZ23.7 | 60 | 65 | 685 | 325 | 300 | 406 |
| KBZ31.5 | 34,5 | 37 | 585 | 270 | 270 | 648 |
| KBZ32.2 | 36 | 39 | 585 | 270 | 270 | 648 |
| KBZ33.7 | 60 | 65 | 685 | 325 | 300 | 406 |
| KBZ35.5 | 77 | 84 | 725 | 355 | 370 | 288 |
| KBZ43.7 | 61 | 66 | 685 | 325 | 300 | 406 |
| KBZ45.5 | 78 | 85 | 725 | 355 | 370 | 288 |





Application

- Civil engineering
- Mines, quarries, Coal ore & slurries
- Sewage treatment plants
- General pumping purposes

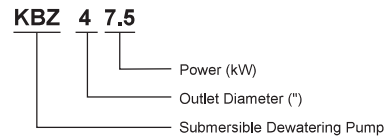
Pump

- Max. liquid temperature: +40°C
- Flow: up to 60 m³/h
- Head: up to 57 m
- Power: 1.5 kW (2 HP) to 15kW (20 HP)
- Max. Immersion depth: 25 m
- Optional cable length

Motor

- Copper winding
- Insulation class: B
- Protection class: IP68

Identification Codes

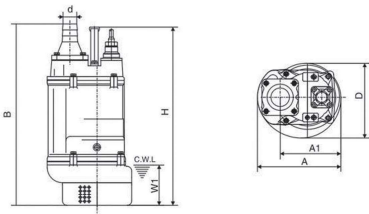


Technical Data

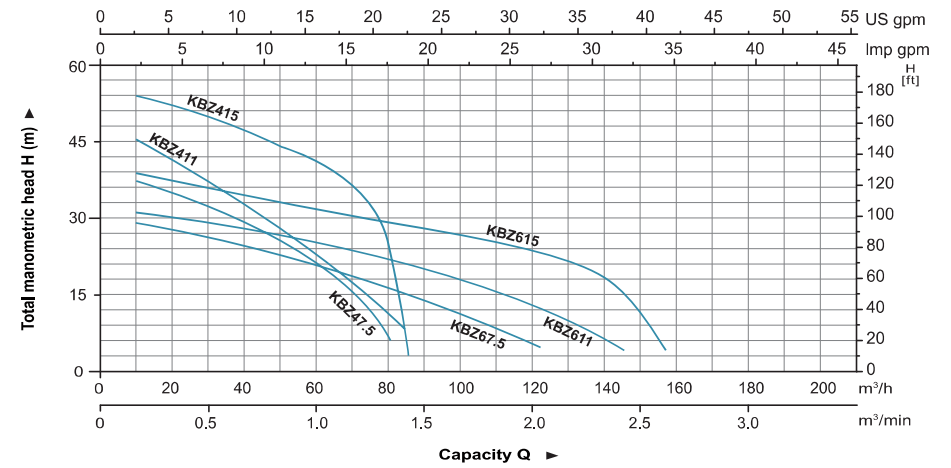
| Model | Outlet mm | Power | | Max head m | Max flow | | Impeller passage mm |
|---------|--------------|-------|----|---------------|-------------------|---------------------|------------------------|
| | | kW | HP | | m ³ /h | m ³ /min | |
| KBZ47.5 | 100 | 7.5 | 10 | 40 | 84 | 1.4 | 11.5 |
| KBZ411 | 100 | 11 | 15 | 48.5 | 86.4 | 1.44 | 11.5 |
| KBZ415 | 100 | 15 | 20 | 56 | 86.4 | 1.44 | 11.5 |
| KBZ67.5 | 150 | 7.5 | 10 | 31 | 124.8 | 2.08 | 19.5 |
| KBZ611 | 150 | 11 | 15 | 32 | 147 | 2.45 | 19.5 |
| KBZ615 | 150 | 15 | 20 | 40 | 156 | 2.6 | 19.5 |

Dimension

| Model | d | A | A1 | B | D | H | W1 |
|---------|-----|-----|-----|-----|-----|-----|-----|
| KBZ47.5 | 100 | 330 | 240 | 764 | 314 | 676 | 190 |
| KBZ411 | 100 | 373 | 255 | 807 | 350 | 695 | 190 |
| KBZ67.5 | 150 | 330 | 240 | 790 | 314 | 676 | 190 |
| KBZ611 | 150 | 373 | 255 | 807 | 350 | 695 | 190 |
| KBZ415 | 100 | 373 | 255 | 842 | 350 | 755 | 190 |
| KBZ415 | 100 | 373 | 255 | 842 | 350 | 755 | 190 |
| KBZ615 | 150 | 373 | 255 | 842 | 350 | 755 | 190 |
| KBZ615 | 150 | 373 | 255 | 842 | 350 | 755 | 190 |

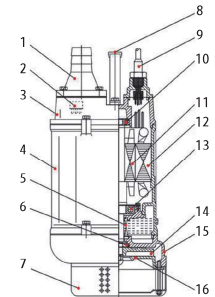


Hydraulic Performance Curves



Materials Table

| No. | Part | Material | No. | Part | Material |
|-----|-------------------|--|-----|-------------|-------------------|
| 1 | Hose coupling | Cast iron | 9 | Cable | |
| 2 | Thermal protector | | 10 | Bearing | |
| 3 | Upper cover | Cast iron | 11 | Rotor | |
| 4 | Motor cover | Cast iron | 12 | Stator | |
| 5 | Oil seal | | 13 | Bearing | |
| 6 | Mechanical seal | SiC-SiC/Carbon-SiC ($\leq 2\text{ kW}$) SiC-SiC/SiC-SiC ($\ge 3,7\text{ kW}$) | 14 | Impeller | High chrome alloy |
| 7 | Strainer | Steel | 15 | Pump body | Cast iron |
| 8 | Handle | Steel | 16 | Inlet plate | Ductile iron |



Package Information

| Model | N.W (kg) | G.W (kg) | L (mm) | W (mm) | H (mm) | Quantity (PCS/20' TEU) |
|---------|-------------|-------------|-----------|-----------|-----------|---------------------------|
| KBZ47.5 | 105 | 114 | 805 | 365 | 390 | 215 |
| KBZ411 | 130 | 140 | 895 | 415 | 440 | 160 |
| KBZ415 | 142 | 153 | 895 | 415 | 440 | 160 |
| KBZ67.5 | 106 | 114 | 835 | 365 | 390 | 205 |
| KBZ611 | 133 | 143 | 855 | 415 | 440 | 160 |
| KBZ615 | 145 | 156 | 895 | 415 | 440 | 160 |

